



Thank you.

Please use the form inside to make your tax-deductible donation or visit mge.com/energyfund.

Warm hands, warm hearts.



Help make our harsh winters warmer for people in need.

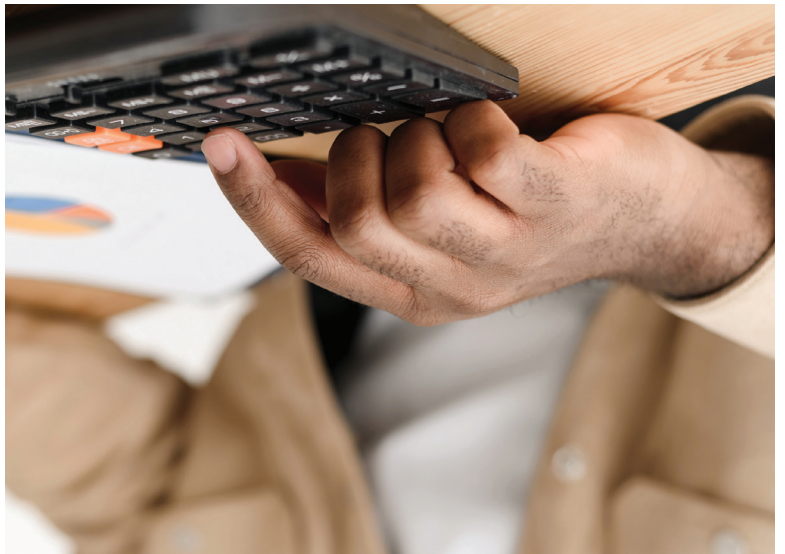
Support the Energy Fund.

mge.com/energyfund



Support the Energy Fund.
Thank you.

Please use the form inside to make your tax-deductible donation.



Help local people facing tough financial situations.

100% of your donation to the Energy Fund goes directly to help people in our area.



What is the Energy Fund?

- Donations come from MGE customers, shareholders and employees.
- MGE shareholders pay the administrative costs of this fund. A nonprofit agency distributes the money.
- Contributors' names are kept confidential.

Who does the Energy Fund help?

Families and individuals who, because of unfortunate events, find it impossible to cover basic living costs. Their difficulties may be caused by medical bills, job loss or other emergencies.

How can you help?

Please make a monthly or a one-time donation by doing one of the following:

- Complete the coupon below and return it with your bill payment.
- Send the completed coupon to:
Madison Gas and Electric Co.
PO Box 1231
Madison WI 53701-1231
- Go to mge.com/energyfund to set up a monthly donation.

Need more information?

- Call (608) 252-7222 or 1-800-245-1125
- Visit mge.com/energyfund

Warm hands, warm hearts.

Energy Fund. Your donation to the Energy Fund is tax-deductible.

Coupon: 30

Name		MGE Account Number	
Address		City	Zip

One-time donation

You may pay your bill and make a donation with just one check.

My one-time donation to the fund is	\$	_____
My energy bill payment is	+	_____
	\$	_____
Enclosed is a check for a total of	=	_____
	\$	_____

Monthly donation

Please add this amount to my energy bill each month. (The amount will appear on your next bill and continue to appear until you notify us of a change.)

- \$2
- \$5
- \$10
- \$15
- Other amount: \$ _____